

1 RF ENCLOSURE FLOOR PLAN
RF1

SCHEDULE		AND/OR BILL OF MATERIALS		
MARK OR PART NO.	SIZE AND/OR DESCRIPTION	QUANTITY	REFERENCE DWG. NO.	REMARKS
A	12" X 12" W.G. AIR VENT	6	RF2	
B	GROUND STUD	1	RF3	
C	E2020-2C P/L FILTER	2	RF3	20 AMP, 2 WIRE
D	PLATE, BRASS 15 1/2" X 15 1/2" X .3/16"	1	RF3	REMOVABLE FOR 12", 12" G.O. W/ 8 BULKHEAD CONN.
E	CONNECTOR, BULKHEAD 'N'	8	RF3	50 OHM
F	INCANDESCENT LT. FIXTURE	8	RF2	3 X 60 WATT



NOTES:

- SHIELDING MATERIAL:
OUTER SHIELD: 22 GA. STL. GALVANIZED
INNER SHIELD: 3 OZ. COPPER
- (1) 36"x76" DEI PERSONNEL DOOR W/
MICROWAVE ABSORBER ON DOOR
- VINYL TILE FLOOR

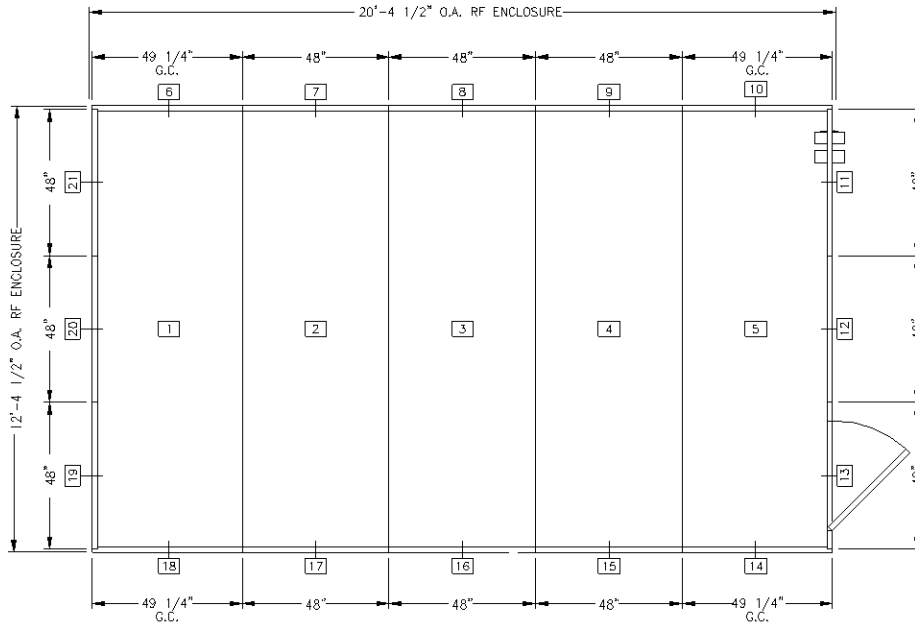
D.E.I. SHIELDED ENCLOSURE
MDL #26W COMBINATION W/ I.B. CLG.

CONTROL DEVICES INC. 13470

LSQ
4/17/97

3/8" = 1'-0"

RF1 A



1 RF ENCLOSURE FLOOR PLAN
RF1

SCHEDULE		AND/OR BILL OF MATERIALS		
MARK OR PART NO.	SIZE AND/OR DESCRIPTION	QUANTITY	REFERENCE DWG. NO.	REMARKS
A	12" X 12" W.G. AIR VENT	6	RF2	
B	GROUND STUD	1	RF3	
C	E2020-2C P/L FILTER	2	RF3	20 AMP, 2 WIRE
D	PLATE, BRASS 15 1/2" X 15 1/2" X .3/16"	1	RF3	REMOVABLE FOR 12", 12" G.O. W/ 8 BULKHEAD CONN.
E	CONNECTOR, BULKHEAD 'N'	8	RF3	50 OHM
F	INCANDESCENT LT. FIXTURE	8	RF2	3 X 60 WATT



NOTES:

- SHIELDING MATERIAL:
OUTER SHIELD: 22 GA. STL. GALVANIZED
INNER SHIELD: 3 OZ. COPPER
- (1) 36"x76" DEI PERSONNEL DOOR W/
MICROWAVE ABSORBER ON DOOR
- VINYL TILE FLOOR

D.E.I. SHIELDED ENCLOSURE
MDL #26W COMBINATION W/ I.B. CLG.

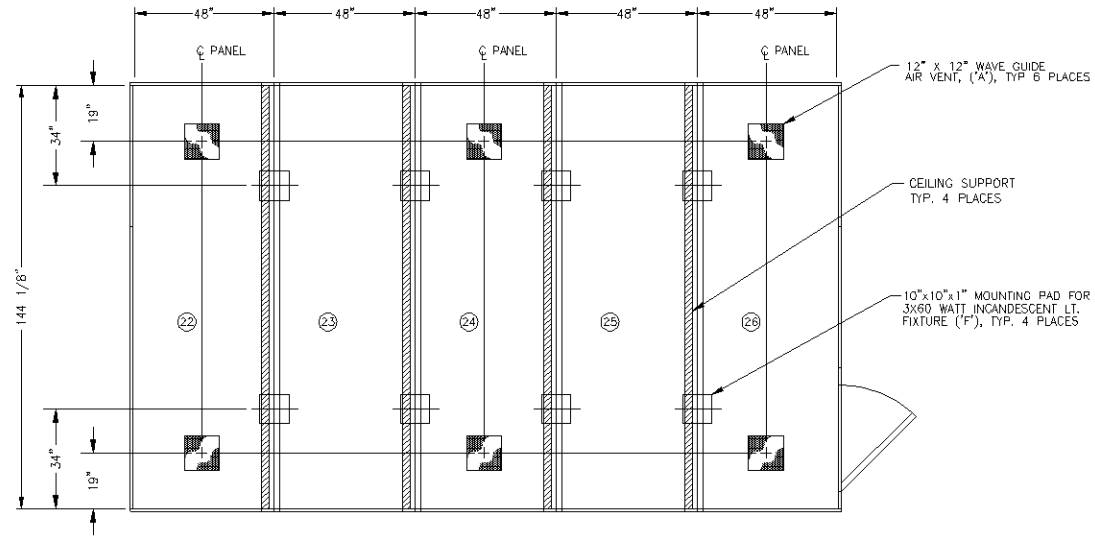
CONTROL 13470
DEVICES INC.

LSQ
4/17/97

3/8" = 1'-0" RF1 A

B 6/6/97 MOVE CEILING SUPPORT TO NEW LOCATION

LSQ



1 RF ENCLOSURE CEILING PLAN
RF2

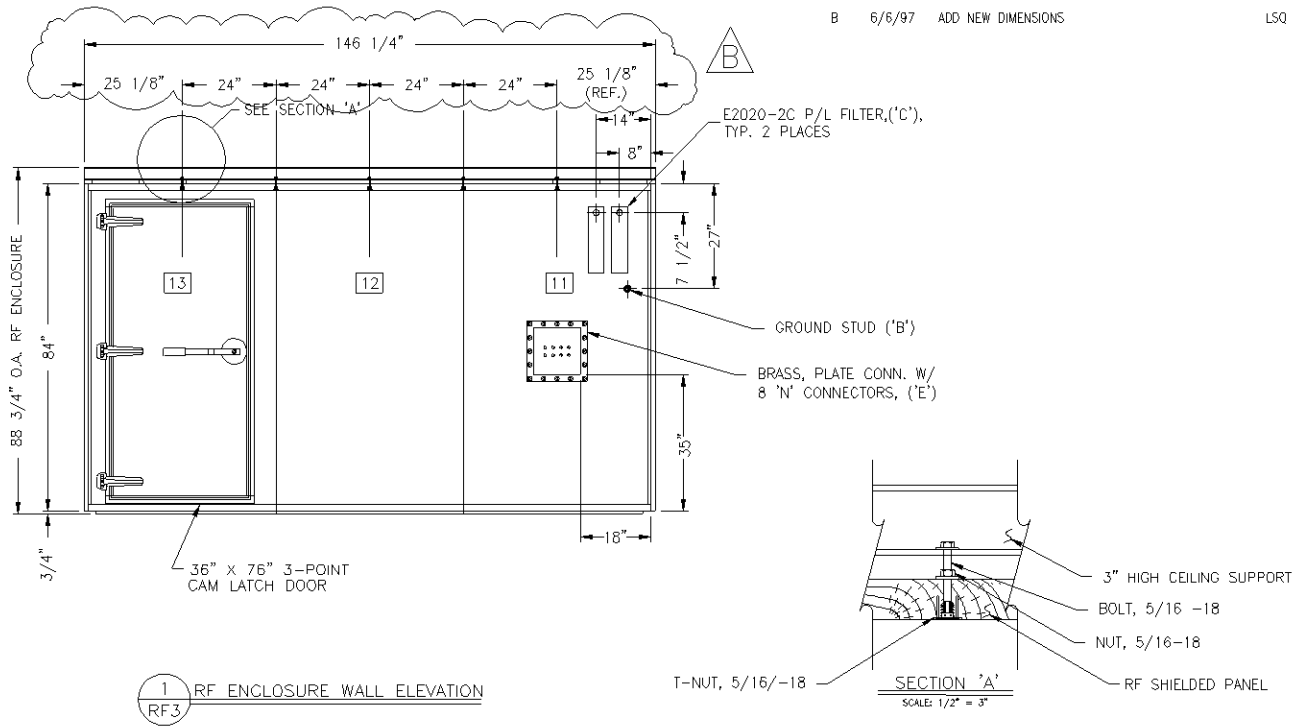
D.E.I. SHIELDED ENCLOSURE
MDL. #26W COMBINATION I.B. CLG.
CONTROL
DEVICES INC. 13470

LSQ
4/17/97

3/8" = 1'-0"

RF2 B





B 6/6/97 ADD NEW DIMENSIONS

LSQ

D.E.I. SHIELDED ENCLOSURE
 MDL #26W COMBINATION W/ I.B. CLG.
 CONTROL DEVICES INC. 13470

LSQ
 4/17/97

1/2" = 1'-0"

RF3 B

