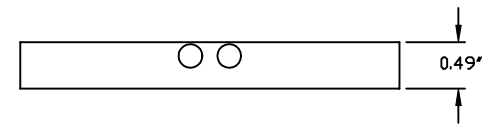
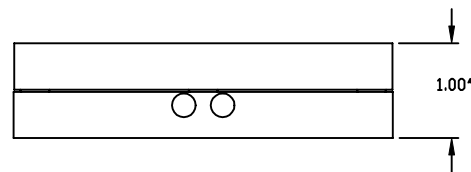


TOP PLATE



BASE PLATE



ASSEMBLED VIEW

INFORMATION ONLY, NOT FOR MANUFACTURING

THORLABS PD BOX 366 NEWTON NJ				
TITLE 4" KINEMATIC BASE				
TOL: X.XXX=+/-0.005 X.XX=+/-0.010 ANGULAR +/-30°				
SURF. FINISH: 32 MICROINCHES UNLESS OTHERWISE NOTED				
DRAWN DAH	ENGINEER AC	APPROVED AC		
MATERIAL: BLACK ANODIZED ALUMINUM				
DATE 08/14/00	REV A	SIZE C	SHEET 1 OF 1	DRAWING SCALE 1" = 1"
DWG NO. 0122-E02	PART NO. KB4X4			